



International Telecommunication Union



BRIFIC (SPACE SERVICES)

Chuen Chern Loo
BR/SSD/SPR

Bangkok, **T**hailand
28 -30 September 2010

BRIFIC - International Frequency Information Circular of the Radiocommunication Bureau



BR IFIC 2629 / 30.09.2008
Space Services

BRIFIC
International
Frequency
Information
Circular
(Space Services)

Contents of the BR IFIC

Browse the Contents by Parts

PART I-S — PART II-S — PART III-S

Browse the Contents by Special Sections

RES49, API/A, API/B, RES4, CR/C, CR/D, AP30A, AP30B, AP30, AP30-30A

Preface, Draft CR/D, AP30*D, Databases, "as received" (RES 55), Cost Recovery

Print, CR Circular Letters, BR Soft, Search, Help, Exit

عربي, 中文, Español, Français, Русский

Photo credits: PhotoDisc, ICO – © ITU 2008 – Licence Agreement – All rights reserved – www.itu.int

Introduction



- **RESOLUTION 30 (WRC-97) Publication of the WIC...**
 - 1. that the publication of the Weekly Circular (WIC) and the special sections on paper and microfiche, as well on diskette, be migrated to a CD-ROM format;
 - 2. that this publication be fortnightly;
 - *instructs the Director of the Radiocommunication Bureau*
 - 1. to initiate the introduction of a CD-ROM format for the publication of the Weekly Circular including the special sections;
 - 3. to provide an index of Parts I, II, III and the special sections printed on paper, for those administrations requesting it;
 - 5. to make the data also available on TIES by remote electronic access on a subscription basis;
 - **Based on the BR positive report, WRC-2000 approved deletion of RESOLUTION 30 (WRC-97).**
-
-
- A decorative graphic at the bottom of the slide consisting of a thick blue horizontal bar on the left and a grey horizontal bar on the right, both positioned above a thin blue line.

Description (1)



- In **CR/134** the Bureau informed all Administrations about the development of a new CD-ROM Publication, the “**BR International Frequency Information Circular**” - **BR IFIC (Space Services)**.
 - This Publication handles **6** multiple languages - English, French, Spanish and **as of 01.01.2005 also in Arabic, Chinese and Russian language**.
 - The transition of the WIC (Space Services) to the BR IFIC (Space Services) was effected as at the end of December, 1999.
 - As off 11 January 2000, the BR IFIC 2410 CD-ROM represents the sole publication format for stations in the Space Services - Articles **9** and **11** of the RR, as well as those that are submitted under the relevant provisions of the Radio Regulations or which are subject to the Appendices **30**, **30A** and **30B** Plans.
-
-
- A large, faint watermark of a globe is visible in the background of the slide.

Description (2)



- The BR IFIC represents an official acknowledgement of receipt, in terms of No. **11.28** of the RR (PART I-S), as far as the frequency assignments to the Space Services are concerned, as well as a statutory publication of the particulars of frequency assignments to the Space Services which are recorded in the Master Register pursuant to the relevant provisions of the RR (PART II-S), or returned to administrations as a result of unfavourable findings (PART III-S).
 - Please note, that the BR IFIC is published every two weeks; the expiry date for comments is counted as from the publication date, which normally coincides with the date of dispatch of the relevant publication to administrations.
-
-
- A large, faint, light blue globe graphic is centered in the background of the slide, partially overlapping the text.

BRIFIC (space services)



- Part I-S
- Part II-S
- Part III-S
- Special Sections
- Others

The Part I-S publication contains particulars of frequency assignments for stations in the space radiocommunication services received by the Bureau for recording in the Master Register and is to be considered the acknowledgement of receipt of the information published.

The Part II-S publication concerns frequency assignments that will be recorded in the Master Register. Generally, these are frequency assignments that have received favourable Findings as well as those that are to be recorded under No. 11.41 or for information only

CR/C, API/A,
CR/D, API/B,
AP30/E, AP30A/E etc.

The Part III-S publication concerns frequency assignments that are returned to the responsible administration. Generally, these are frequency assignments that have received unfavourable Findings as well as those that are found to be non-compliant with various provisions of the RR.

Special Sections



		UNION INTERNATIONALE DES TÉLÉCOMMUNICATIONS BUREAU DES RADIOCOMMUNICATIONS		INTERNATIONAL TELECOMMUNICATION UNION RADIOCOMMUNICATION BUREAU		UNIÓN INTERNACIONAL DE TELECOMUNICACIONES OFICINA DE RADIOCOMUNICACIONES		© I.T.U.	
RÉSEAU À SATELLITE SATELLITE NETWORK RED DE SATELÍTE			YAHSAT-N-40W			SECTION SPÉCIALE N ^o SPECIAL SECTION No. SECCIÓN ESPECIAL N.º			API/A/5294
						BR IFIC / DATE BR IFIC / DATE BR IFIC / FECHA			2629 / 30.09.2008
ADM. RESPONSABLE RESPONSIBLE ADM. ADM. RESPONSABLE		UAE	LONGITUDE NOMINALE NOMINAL LONGITUDE LONGITUD NOMINAL		40 W	NUMÉRO D'IDENTIFICATION IDENTIFICATION NUMBER NÚMERO DE IDENTIFICACIÓN			108540456

11.08.2008

publica por la Oficina de Radiocomunicaciones 9.28. Está sujeta al (a los) procedimiento(s) (e) con una X en la casilla apropiada.

		UNION INTERNATIONALE DES TÉLÉCOMMUNICATIONS BUREAU DES RADIOCOMMUNICATIONS		INTERNATIONAL TELECOMMUNICATION UNION RADIOCOMMUNICATION BUREAU		UNIÓN INTERNACIONAL DE TELECOMUNICACIONES OFICINA DE RADIOCOMUNICACIONES		© I.T.U.	
RÉSEAU À SATELLITE SATELLITE NETWORK RED DE SATELÍTE			EUROPE*STAR-47.5E-A			SECTION SPÉCIALE N ^o SPECIAL SECTION No. SECCIÓN ESPECIAL N.º			CR/C/2225
TERRESTRIENNE SATÉLITE TERRENA			---			BR IFIC / DATE BR IFIC / DATE BR IFIC / FECHA			2629 / 30.09.2008
RESPONSABLE RESPONSIBLE ADM. RESPONSABLE		D	LONGITUDE NOMINALE NOMINAL LONGITUDE LONGITUD NOMINAL		47.5 E	NUMÉRO D'IDENTIFICATION IDENTIFICATION NUMBER NÚMERO DE IDENTIFICACIÓN			108520025
ELEMENTS REÇUS PAR LE BUREAU / INFORMATION RECEIVED BY THE BUREAU ON / INFORMACIÓN RECIBIDA POR LA OFICINA EL								28.05.2008	

ido recibida de conformidad con el artículo 9,

que estime que pueden causarse interferencias des o sistemas de satélites existentes o previstos ventarios a la administración que haya publicado la a la Oficina de Radiocomunicaciones, en un plazo os a partir de la fecha de esta publicación.

ido recibida de conformidad con el artículo 9,

ión que considere que sus sistemas o redes de lenales, según el caso, existentes o planificados drá comunicar sus comentarios a la administración publicación de la información, enviando una copia de la Oficina de Radiocomunicaciones.

e : <http://www.itu.int/ens/adv/pub.html>

de coordination, reçue par le Bureau des radiocommunications en éno 9.30 du Règlement des radiocommunications, a été examinée au éno 9.35 et 9.36 et est publiée conformément au numéro 9.38. Elle éno au type de coordination indiqué dans la colonne de gauche par i case pertinente.

This request for coordination, received by the Radiocommunication Bureau pursuant to No. 9.30 of the Radio Regulations, has been examined under Nos. 9.35 and 9.36 and is published in accordance with No. 9.38. It is subject to the form of coordination indicated in the left hand column by an X in the relevant box

Esta solicitud de coordinación, recibida por la Oficina de Radiocomunicaciones de conformidad con el punto N^o 9.30 del Reglamento de Radiocomunicaciones, se ha examinado de conformidad con los N^{os} 9.35 y 9.36 y se publica de conformidad con el N^o 9.38. Está sujeta al formulario de coordinación indicado en la columna de la izquierda con una X en la casilla correspondiente.

indication mentionné dans le Tableau I / Form of coordination referred to in Table I / Forma de coordinación mencionada en el cuadro I

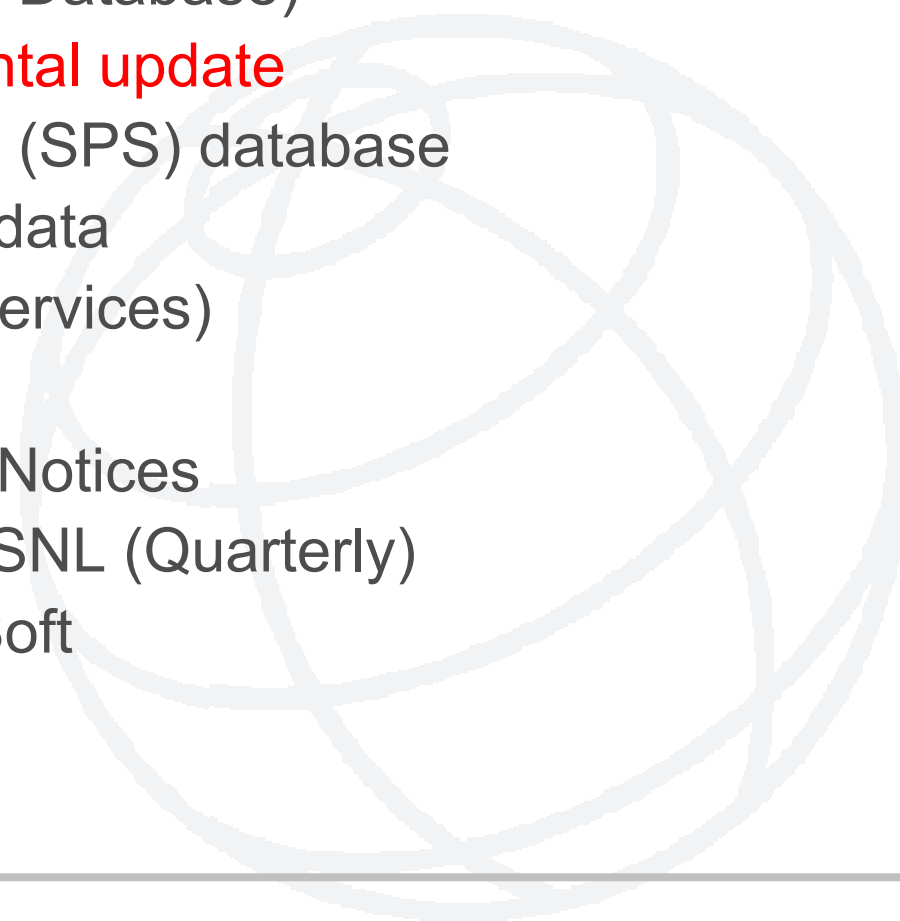
CONF. 1	Conformément aux numéros 9.50 à 9.52 du Règlement des radiocommunications, les Administrations identifiées dans le Tableau I ci-après sont priées de communiquer leur décision à l'Administration responsable et au Bureau avant la date limite indiquée ci-dessous.	In accordance with Nos. 9.50-9.52 of the Radio Regulations, the Administrations identified in Table I below are requested to communicate their decision to the Responsible administration and the Bureau by the deadline indicated below.	De conformidad con los N ^{os} 9.50-9.52 del Reglamento de Radiocomunicaciones, se solicita a las administraciones señaladas en el cuadro I a continuación que comuniquen su decisión a la administración responsable y a la Oficina antes del plazo indicado más abajo.
CONF. 1			
7			
4			
39			
393			

indication mentionné dans le Tableau I / Form of coordination referred to in Table I / Formulario de coordinación remitido al cuadro I

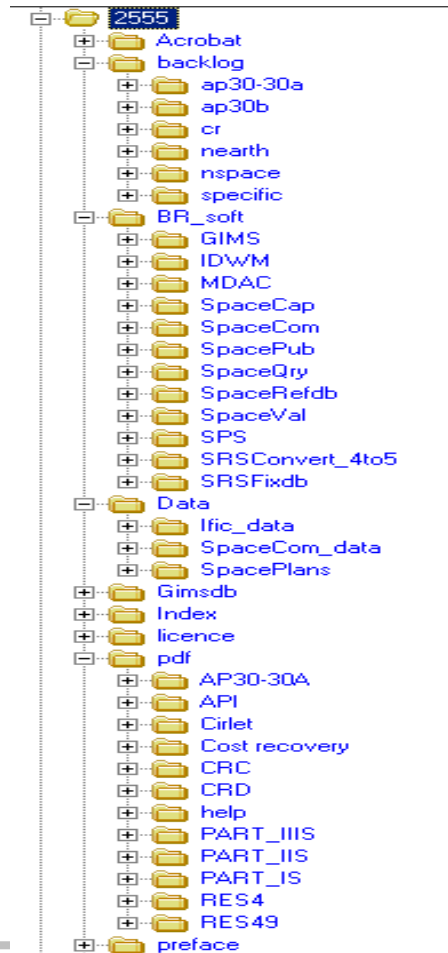


Other items distributed on the BR IFIC



- IFIC data (MS Access Database)
 - GIMS data – **incremental update**
 - Space Plans Systems (SPS) database
 - CR/D, AP30*/D Draft data
 - The Preface (Space services)
 - Cost Recovery Status
 - List of "As Received" Notices
 - Space Network List - SNL (Quarterly)
 - BRSoft and Beta BRSoft
-
- 
- A large, faint, light gray watermark of a globe is visible in the background of the slide, centered behind the list of items.

BR IFIC CD-ROM "explorer" structure





IFIC Data

- The **ificxxx.mdb** file (MS Access format), published on the BR IFIC CD-ROM, is located in the **"data"** directory.
This file contains TSUM data of:

- Part-IS, Part-IIS and Part-IIIS
- Special Sections:
 - API/A (as of IFIC 2464/05.03.2002)
 - CR/C (as of IFIC 2460/24.01.2002)
 - RES49 (as of IFIC 2553/20.09.2005)

if they are present in the Table of Contents of the IFIC

Space Plan Data



- **Data for Planned Space Networks (Appendices 30, 30A & 30B)**

- The **technical characteristics and reference situation (EPM)** for Planned networks can be found in the [/data/SpacePlans/SPS/](#) directory. This database (MS Access 2000 format) is an extension of the SNS database and contains data for AP30/30A Plans & Lists and for pending Article 4 networks. Note that this database does not yet contain data for AP30B networks. In order to properly view the database, SpaceCap (v5.2 or later) or SpacePub (v5.3 or later) software is required.
 - The **MSPACEg output database for each network** can be found in the [/data/SpacePlans/MSPACEg_results/](#) directory. This database (MS-Access) contains the detailed results of MSPACE calculation.
-
-
- A thick blue horizontal bar at the bottom of the slide.



GIMS Data -incremental update

- GIMS – graphical interference management system
 - Full GIMS database is distributed with each SRS on DVD (issued twice a year)
 - You should install GIMS ver 3.4 or above **from the SRS on CD-ROM** to profit from the GIMS reference database **incremental update** that have been started as of **IFIC 2504/07.10.2003**.
 - To make sure the GIMS reference database may be updated, you should install it **locally from the SRS on CD-ROM**. This option is proposed during the GIMS installation program.
 - *After a new SRS on CD-ROM release, the incremental update database on the BR IFIC is cleared and will be filled again until the next SRS CD.*
-
-
- A decorative graphic at the bottom of the slide consisting of a thick blue horizontal bar on the left and a grey horizontal bar on the right, with a faint globe watermark in the background.



How does it work? (1)

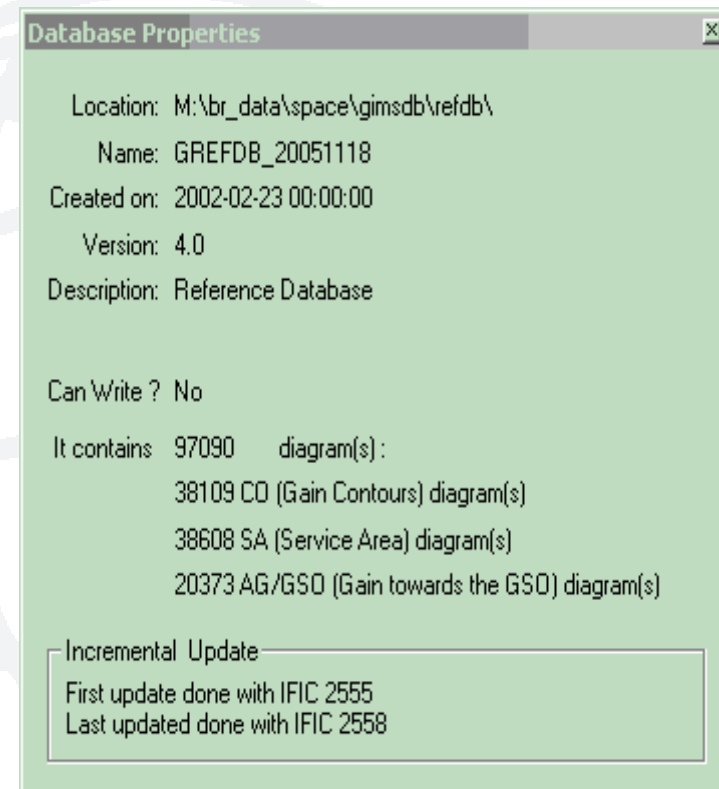
- As you may already have experienced, even if you work with a local copy of REFDB it is automatically updated with the latest data found either on SRS or IFIC CD-ROMs. The same ease of use will be provided with the incremental update database.
 - Once REFDB is configured to be local, the incremental update procedure is **started automatically** whenever you open REFDB and an IFIC CD-ROM is in the CD reader. GIMS checks whether an incremental update database is available and whether there are new update actions to be performed.
-
-
- A large, faint, light-colored globe graphic is centered in the background of the slide, behind the text.



GIMS Data -incremental update

How does it work? (2)

- The incremental update database gets bigger on every IFIC CD because it contains all updates to be performed in between two releases of the SRS CD-ROM. This way ***you can just use the latest IFIC CD available to make your REFDB copy up-to-date.***





CR/D draft

- In order to assist the *notifying ADM responsible for the satellite network* published in a CR/C special section and the Bureau in completing its task under No. **9.53A**, the following approach has been developed and included in the SpaceCom software package.
 - Upon expiry of the deadline for comments and on the basis of its records, the Bureau will make available a draft CR/D database per network (named **IFICnnnn_BR_CRCxxxx.mdb**) located in BR IFIC CD-ROM folder at **/Data/SpaceCom data**. This database is containing a listing of ADM, which have submitted a disagreement under No. **9.52** to one or more requests for coordination within the regulatory four-month time limit.
 - *Other ADM* - for information by using the module 'Viewer' of the SpaceCom software package.
 - Spacecom now extended to API/B and AP30*/D
 - For more information see CR/193 of 23 May 2003 and CR/185.
-
-



The Preface (Space services)

- This folder contains the complete Preface (Space Services) in **six** languages (English, French, Spanish, Arabic, Chinese and Russian)



RADIOCOMMUNICATION BUREAU

PREFACE

TO THE BR INTERNATIONAL FREQUENCY INFORMATION CIRCULAR BR IFIC
(Space Services)

List of information "as received" (1)



RES55 (WRC-2007) in its

- *instructs the Radiocommunication Bureau*
 - to make available coordination requests and notifications, "as received", on its **BR IFIC CD-ROM**, within 30 days of receipt, and also on its website;
 - **Note: This advance version of the information received from the Administrations is not to be confused with the official publication of the relevant Part or Special section, which is yet to occur.**



List of information "as received" (2)



ITU International Telecommunication Union

BR IFIC 2541 / 05.04.2005
Space Services

BRIFIC
International Frequency Information Circular (Space Services)

RES 55 (WRC-2000)
List of information "as received"
In application of the Resolution 55

- Coordination Request (ART 9)
- Space Plans AP 30B
- Space Plans AP 30/30A
- Specific GSO FSS receive Earth Stations RES 58 (WRC-2000)
- Notifications Space Stations (ART 11)
- Notifications Earth Stations (ART 11)

[Home](#)

Photo credits: PhotoDisc, ICO – © ITU 2005 – Licence Agreement – All rights reserved – www.itu.int

List of information "as received" (3)



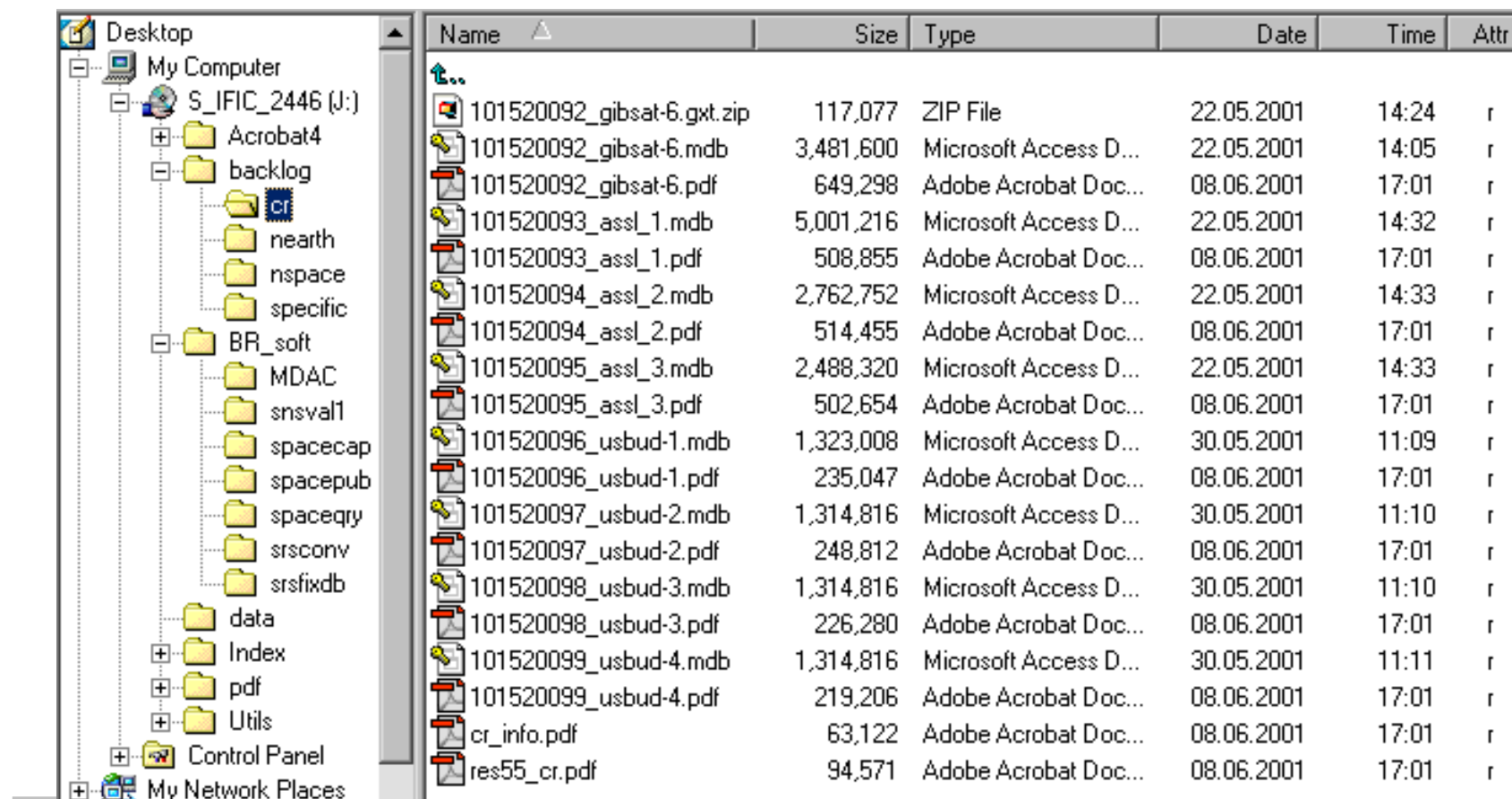
<p>NOTICES (COORDINATION REQUESTS) RECENTLY RECEIVED UNDER ARTICLE 9 بطاقات (طلبات تنسيق) تم استلامها حديثاً بموجب المادة 9 根据第9条近期收到的 (协调请求) 通知 NOTIFICACIONES (PETICIONES DE COORDINACIÓN) RECIBIDAS RECIENTEMENTE CON ARREGLO AL ARTÍCULO 9 FICHES DE NOTIFICATION (DEMANDES DE COORDINATION) RÉCEMMENT REÇUES AU TITRE DE L'ARTICLE 9 ЗАЯВКИ (ЗАПРОСЫ О КООРДИНАЦИИ), ПОЛУЧЕННЫЕ НЕДАВНО, СОГЛАСНО СТАТЬЕ 9</p>	
<p>BR IFIC / DATE النشرة الإعلامية الدولية للترددات / رقمها وتاريخها 无线电通信局国际频率信息通报 / 日期 BR IFIC / FECHA BR IFIC / DATE ИФИК БР / ДАТА</p>	<p>2616 / 01.04.2008</p>

(Explanatory Notes / ملاحظات توضيحية / 注释 / Notas explicativas / Notes explicatives / Пояснительные замечания)

NTC_ID	AMS	ADM	NTWK_ORG	SAT_NAME (Link to files)	LONG_NOM	D_RCV
108520069	A	CAN		CASCADE-CX	NGSO	12.03.2008
108520068	A	INS		TELKOM-3EK	118.00	11.03.2008
108520067	A	G		IOMBSN-A	-115.00	07.03.2008
108520070	A	IND		INSAT-NAV(131.5)	131.50	13.12.2007

<p>The list of pending requests is available on ترد قائمة الطلبات التي ما زالت في الانتظار على الموقع 国际电信联盟 La lista de peticiones pendientes es disponible en La liste des demandes en attente est disponible Перечень рассматриваемых запросов представлен на</p>	<p>http://www.itu.int/itu-r/space/snl/</p>
---	--

List of information "as received" (4)



The screenshot shows a Windows Explorer window with the left pane displaying the folder structure of 'S_IFIC_2446 (J:)'. The right pane shows a detailed list of files with columns for Name, Size, Type, Date, Time, and Attr.

Name	Size	Type	Date	Time	Attr
101520092_gibsat-6.gzt.zip	117,077	ZIP File	22.05.2001	14:24	r
101520092_gibsat-6.mdb	3,481,600	Microsoft Access D...	22.05.2001	14:05	r
101520092_gibsat-6.pdf	649,298	Adobe Acrobat Doc...	08.06.2001	17:01	r
101520093_assl_1.mdb	5,001,216	Microsoft Access D...	22.05.2001	14:32	r
101520093_assl_1.pdf	508,855	Adobe Acrobat Doc...	08.06.2001	17:01	r
101520094_assl_2.mdb	2,762,752	Microsoft Access D...	22.05.2001	14:33	r
101520094_assl_2.pdf	514,455	Adobe Acrobat Doc...	08.06.2001	17:01	r
101520095_assl_3.mdb	2,488,320	Microsoft Access D...	22.05.2001	14:33	r
101520095_assl_3.pdf	502,654	Adobe Acrobat Doc...	08.06.2001	17:01	r
101520096_usbud-1.mdb	1,323,008	Microsoft Access D...	30.05.2001	11:09	r
101520096_usbud-1.pdf	235,047	Adobe Acrobat Doc...	08.06.2001	17:01	r
101520097_usbud-2.mdb	1,314,816	Microsoft Access D...	30.05.2001	11:10	r
101520097_usbud-2.pdf	248,812	Adobe Acrobat Doc...	08.06.2001	17:01	r
101520098_usbud-3.mdb	1,314,816	Microsoft Access D...	30.05.2001	11:10	r
101520098_usbud-3.pdf	226,280	Adobe Acrobat Doc...	08.06.2001	17:01	r
101520099_usbud-4.mdb	1,314,816	Microsoft Access D...	30.05.2001	11:11	r
101520099_usbud-4.pdf	219,206	Adobe Acrobat Doc...	08.06.2001	17:01	r
cr_info.pdf	63,122	Adobe Acrobat Doc...	08.06.2001	17:01	r
res55_cr.pdf	94,571	Adobe Acrobat Doc...	08.06.2001	17:01	r

List of information “as received” (5)



- **WEB** support

- SNL PART C

- <http://web.itu.int/ITU-R/space/snl/index.html>

- **FTP** distribution

- You can download all Pending “as received” from the BR FTP area:

- FTP: www.itu.int
 - Username: space
 - Password: brific



Main Features (1)



● Printing

- Starting with BR IFIC 2548/12.07.2005, all BR IFIC publications (Parts and Special sections) will contain a mark - ITU logo:



at the bottom right of each page. This mark shall identify an official ITU BR (space services) publication (Part or Special section).

- **Please note: As some information may be missing or has changed at the time you print the Part or a Special section with SpacePub using the IFICxxxx.mdb or SRS.mdb, the resulting print cannot be considered as an official ITU BR (space services) publication .**
 - **The only official reference is the corresponding Part or Special section contained in PDF format in the BR IFIC CD-ROM.**
-
-
- A thick blue horizontal bar at the bottom of the slide.

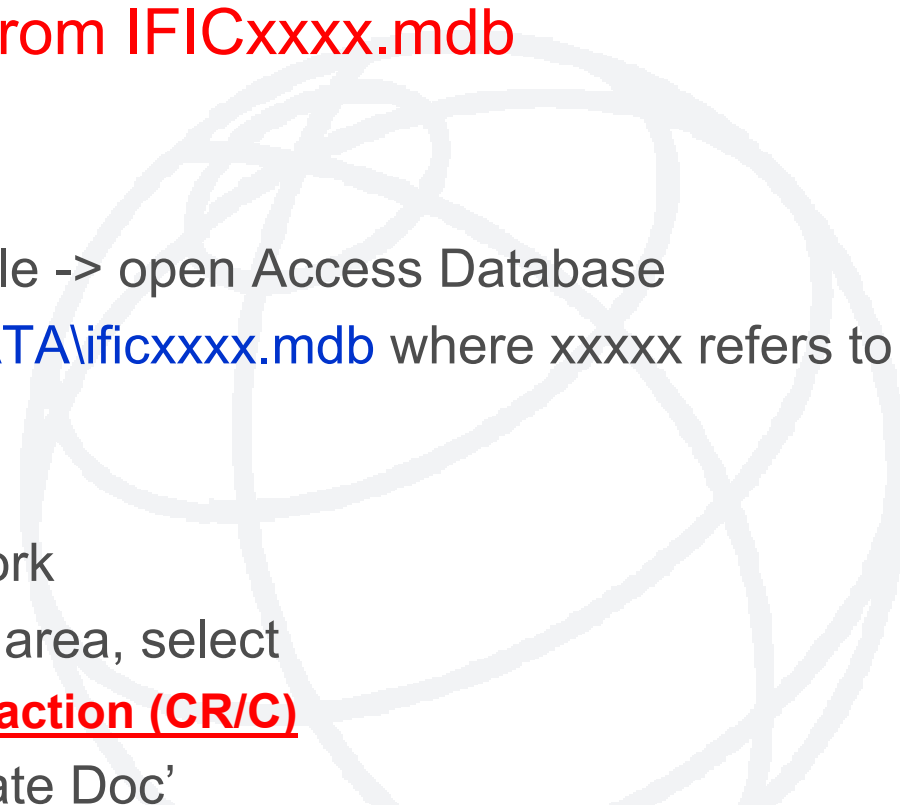
Main Features (2)



- **Printing (in PDF format)**
 - per Special section or
 - the complete set of all Special sections
 - **As of 3 September 2002 (BR IFIC 2477), the format of the CR/C/.... Special Sections has been changed as follows:**
 - The detailed characteristics – Transaction Summary (TSUM) of the network, which exist in database format in the IFICXXX.MDB file, is no longer included in the PDF version of the CR/C/
 - This information can be easily accessed by using SpaceQuery and SpacePub software packages and printed out in the desired format.
-
-
- A large, faint, light blue globe graphic is centered in the background of the slide, behind the text.

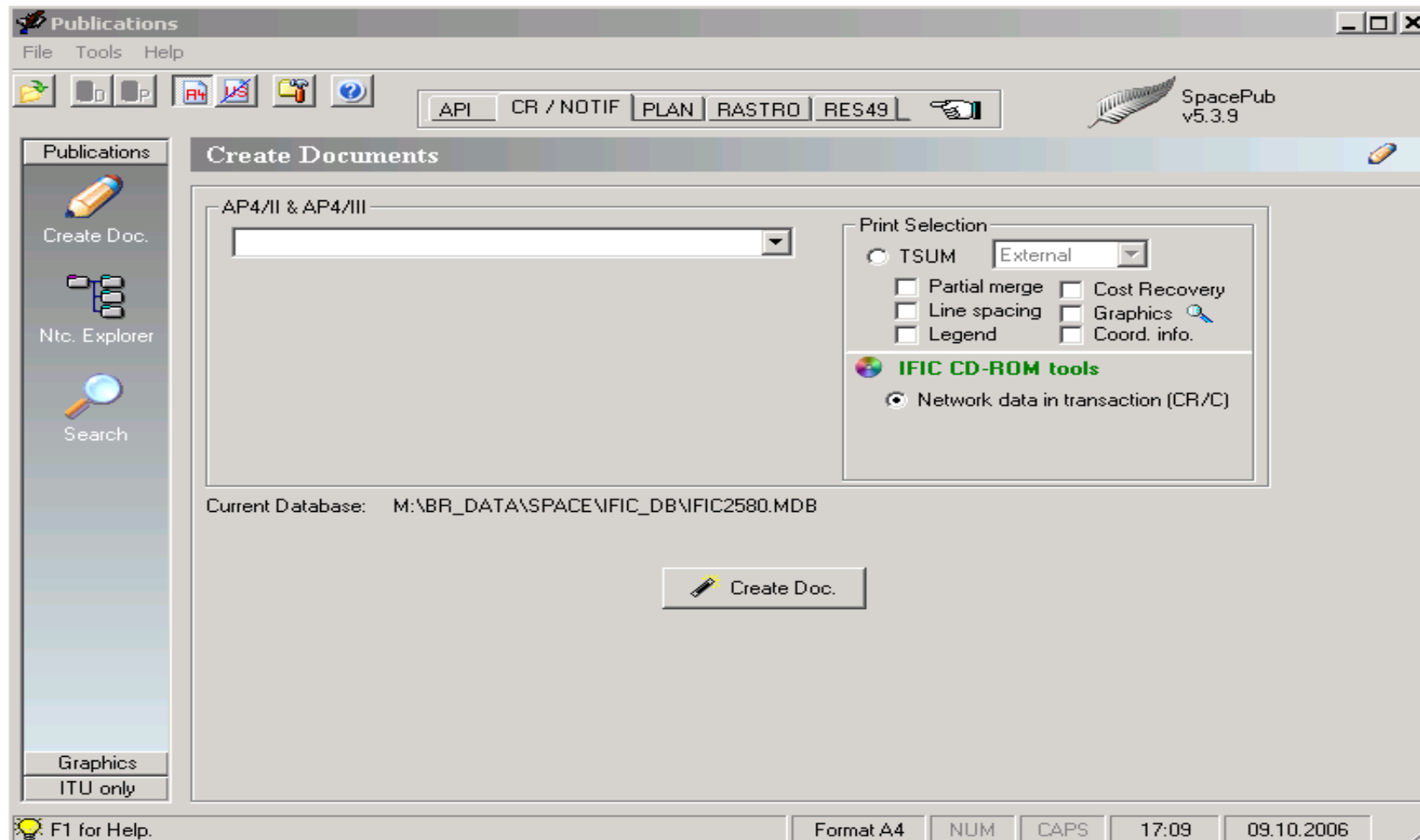
Main Features (3)



- **Printing of the TSUM from IFICxxxx.mdb**
 - Open SpacePub
 - From the menu, select file -> open Access Database
 - Select the database `\DATA\ificxxxx.mdb` where xxxxx refers to the number of the BRIFIC
 - Select 'AP4' option tab
 - Select the desired network
 - From the Print selection area, select
 - **network data in transaction (CR/C)**
 - Click on the button 'Create Doc'
-
- 



Printing of the CR/C MOD or complete





Space Networks List - SNL


- On a quarterly basis, the complete Space Networks List (SNL) is annexed to the BR IFIC (Space Services) CD-ROM.
 - **The SNL contains 20 sections. It has been prepared with a view to informing Administrations in a comprehensive manner of planned or existing space stations and Earth stations giving information on the use of the frequency spectrum, the occupancy of the geostationary orbit as well as on non-geostationary orbits.**
 - It is placed in the SNL folder in the Portable Document Format (PDF).
 - To facilitate further technical analysis, each Section will also be provided as a delimited text file (*.CSV)
 - **More info:**
 - <http://www.itu.int/ITU-R/space/snl/>
 - **CR/141** and **CR/232**
-

- The latest version of **BR software** provided on the BR IFIC CD-ROM
 - **SpaceQry**, which can be used to query into the database and retrieve and view the alphanumeric data;
 - **SpaceCap**, which allows the capture and electronic notification of Appendix 4 notices;
 - **SpacePub**, an interactive tool to print satellite networks and earth stations;
 - **SpaceVal**, which can be used for validating electronic notices that are in the SNS electronic notice format;
 - **SpaceRefdb**, an update tool that will update the reference tables used by BR software;
 - **SpaceCom**, management of the comments on CR/C Special Sections concerning requests for coordination under No. **9.11** to **9.14**, **9.21** and **RS33 2.1**;
 - **SRSConvert**, to convert the data contained in an existing SRS-formatted database from a version 4 database (WRC-2000) into a version 5 database (WRC-03);
 - **GIMS**, allows the capture and modification of graphical data relating to the electronic notification of satellite networks;
 - **IDWM**, the ITU Digitized World Map;
 - **SPS**, determination of the coordination requirements for the Plans for space networks in AP 30, 30A and 30B.

BETA BRSoft



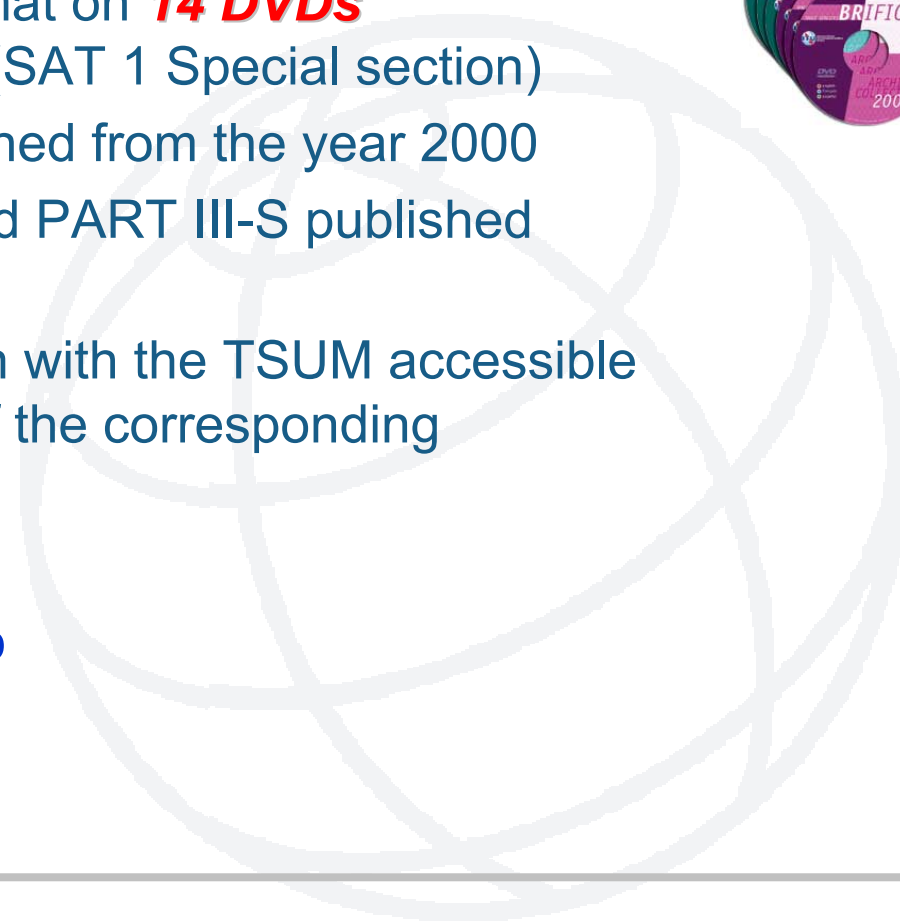
The **BETAsoft** folder was created for distribution of some new beta versions of the BRsoft

A large, faint, light gray watermark of a globe is centered on the page, behind the main text.

Annual BR WIC and BR IFIC (Space services) **Collection** on DVD



- **ALL** reference Special Sections and PARTs related to Space services in PDF format on **14 DVDs** as of **WIC 639/16.02.1965** (SAT 1 Special section)
- It contains PART I-S published from the year 2000
- It contains all PART II-S and PART III-S published from the year 1993
- It contains CR/C publication with the TSUM accessible by a link in the bookmark of the corresponding publication
- **Direct link** to **SNS online**
- **Direct link** to **IFICxxxx.mdb**



Annual BR WIC and BR IFIC (Space services) **Collection** on DVD



- **Some WIC/IFIC Publications Statistics in the SNL (Part-B)**
(as of 01.04.2008)

- Total Publications reference: 55 362
 - Space Stations: 43 312 (GSO-39 632 / N-GSO 3 680)
 - API : 18 556
 - Coordination : 12 497
 - Notification : 5 263 (Space stations) / 7 010 (Earth stations)
-
-

Annual BR WIC and BR IFIC (Space services) **Collection** on DVD



- **Access to the publications and data**

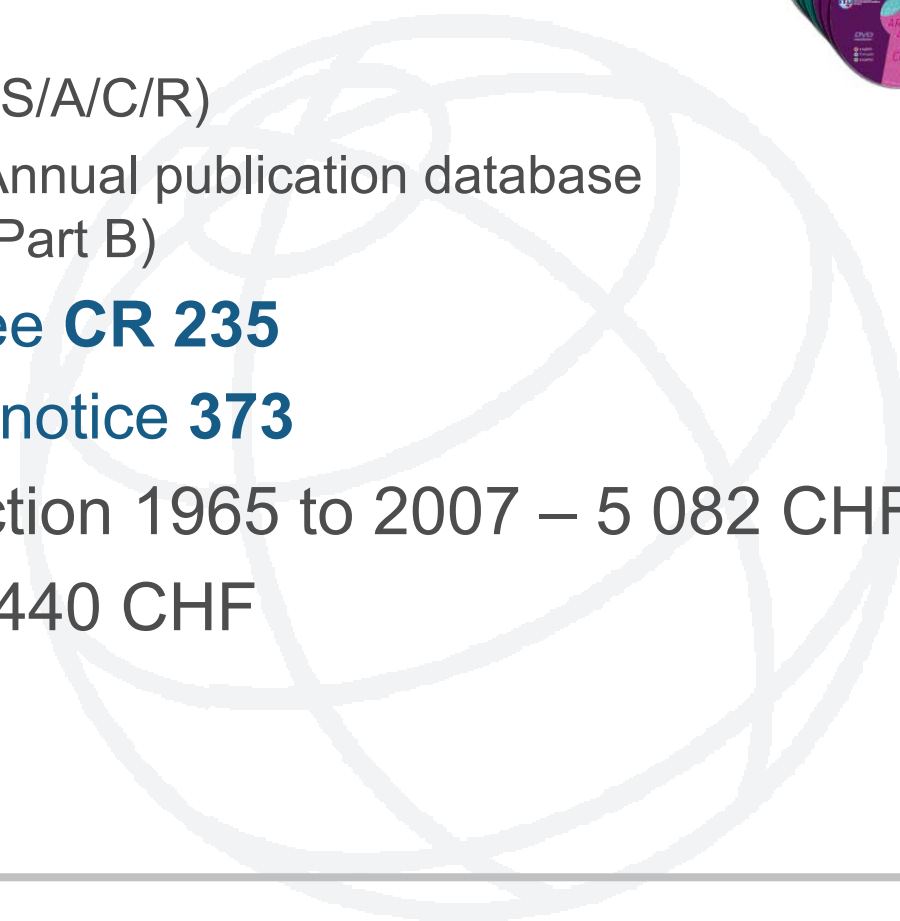
- Each DVD contains a List in PDF format of all the Parts and Special sections with a link to the corresponding publication
- Searches of the data can be carried out using an interface similar to the one in the SNL web page
- The results are linked to the corresponding publications
- The query is done on the whole publication data, from the year 1965 to the year 2007. But the publications are available only on the relevant DVD
- The query system is installed locally on the user PC. After installation, it can be used, without access to the publication documents, without the BR WIC/IFIC Collection DVD-ROM.



Annual BR WIC and BR IFIC (Space services) on DVD



- From year 2005 this DVD is issued once a year
- **New features**
 - 6 Language option (E/F/S/A/C/R)
 - Quarterly update of the Annual publication database (SNL Quarterly Report - Part B)
- For more information see **CR 235**
- Sales info - Publication notice **373**
 - The complete collection 1965 to 2007 – 5 082 CHF
 - Annual collection – 440 CHF





International Telecommunication Union

BR IFIC (Space Services)

Questions ?

Chuen Chern Loo
BR/SSD/SPR